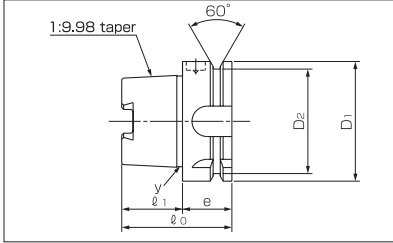


Shank Standards シャンク規格

HSK shank : ISO 12164-1, DIN 69893-1, JIS B 6064-1

unit:mm

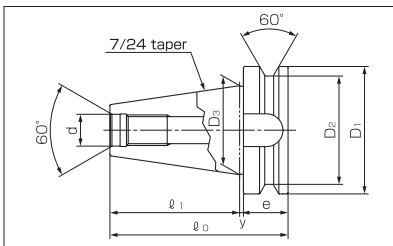


shank no.	l_0	l_1	e	y	D ₁	D ₂
HSK-A-63	58	32	26	2.5	63	55
HSK-A-100	79	50	29	2.5	100	92

※HSK shank with holes for manual clamping is available as a special order.
※マニュアルクランプ穴付HSKシャンクは特別注文品です。

BT shank : ISO 7388-2, JIS B 6339

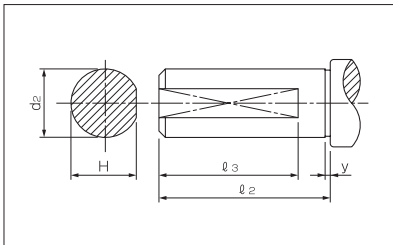
unit:mm



shank no.	l_0	l_1	e	y	D ₁	D ₂	D ₃	d	thread
BT30	70.4	48.4	20	2	46	38	31.75	12.5	M12x1.75
BT35	80.4	56.4	22	2	53	43	38.10	12.5	M12x1.75
BT40	92.4	65.4	25	2	63	53	44.45	17.0	M16x2.0
BT45	115.8	82.8	30	3	85	73	57.15	21.0	M20x2.5
BT50	139.8	101.8	35	3	100	85	69.85	25.0	M24x3.0
BT55	169.8	126.8	40	3	120	107	88.90	31.0	M30x3.5
BT60	209.8	161.8	45	3	155	135	107.95	31.0	M30x3.5

STT shank : Flatted cylindrical parallel shank for CNC lathes

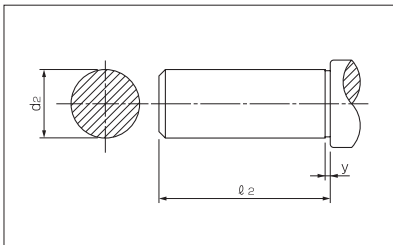
unit:mm



shank no.	l_0	l_1	y	d ₂	H
STT25	75	70	3	25	24.0
STT32	80	75	3	32	30.5
STT40	80	75	3	40	38.5
STT42	80	75	3	42	40.5
STT50	90	85	3	50	47.5

ST shank : Cylindrical parallel shank for CNC lathes

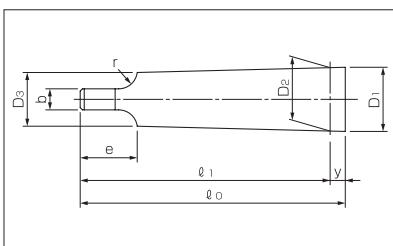
unit:mm



shank no.	l_0	y	d ₂
ST25	75	3	25
ST32	80	3	32
ST40	80	3	40
ST42	80	3	42
ST50	90	3	45

Morse taper shank : ISO 296, DIN 228, JIS B 4003

unit:mm



shank no.	l_0	l_1	y	D ₁	D ₂	D ₃	r	e	b
MT0	59.5	56.5	3.0	9.2	9.045	6.1	4	10.5	3.9
MT1	65.5	62.0	3.5	12.2	12.065	9.0	5	13.5	5.2
MT2	80.0	75.0	5.0	18.0	17.780	14.0	6	16.0	6.3
MT3	99.0	94.0	5.0	24.1	23.825	19.1	7	20.0	7.9
MT4	124.0	117.5	6.5	31.6	31.267	25.2	8	24.0	11.9
MT5	156.0	149.5	6.5	44.7	44.399	36.5	10	29.0	15.9
MT6	218.0	210.0	8.0	63.8	63.348	52.4	13	40.0	19.0