

MODEL ER (ISO 15488, DIN 6499)

Model ER8 collets for model RF103 tappers ER8型テーパコレット (RF103型用) unit:mm

tap size		tap shank dia. d1	model	H4	D2	matching spanner
metric thread	unified thread					
M1~M2.6	U No.0~U No.4	3	ER8-3	13.5	8.0	ES8M
M3・M3.5	U No.5・U No.6	4	ER8-4			

Model ER11 collets for model RF306 tappers ER11型テーパコレット (RF306型用) unit:mm

tap size		tap shank dia. d1	model	H4	D2	matching spanner
metric thread	unified thread					
M3・M3.5	No.5・U No.8	4.0	ER11-4	18.0	11.5	ES11M
M4・M4.5	No.8	5.0	ER11-5			
M5・M5.5	No.10・U No.12	5.5	ER11-5.5			
M6	U 1/4	6.0	ER11-6			

Model ER20 collets for model RF414 tappers ER20型テーパコレット (RF414型用) unit:mm

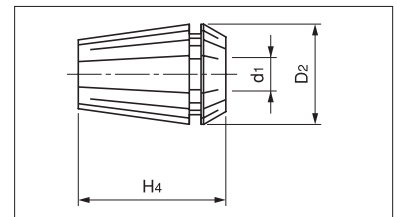
tap size		tap shank dia. d1	model	H4	D2	matching spanner
metric thread	unified thread					
M4・M5	No.8	5.0	ER20- 5	31.5	21.0	ES20M
M5・M5.5	No.10・No.12	5.5	ER20- 6			
M6	U 1/4	6.0	ER20- 6			
	U5/16	6.1	ER20- 7			
M7・M 8		6.2	ER20- 7			
M9・M10	U 3/8	7.0	ER20- 7			
M11	U7/16	8.0	ER20- 8			
M12		8.5	ER20- 9			
M14	U 1/2	9.0	ER20- 9			
	U9/16	10.5	ER20-11			

Model ER20-GB collets for model RF414-OHC tappers ER20-GB型角穴付テーパコレット (RF414-OHC型用) unit:mm

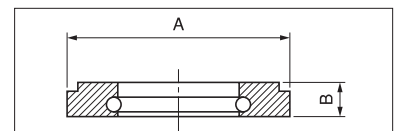
tap size		tap shank dia. d1	model	H4	D2	matching spanner
metric thread	unified thread					
M4・M5	No.8	5.0	ER20- 5	31.5	21.0	SP-ER20
M5・M5.5	No.10・No.12	5.5	ER20- 5.5			
M6	U 1/4	6.0	ER20- 6.0			
		6.2	ER20- 6.2			
M7・M 8		7.0	ER20- 7.0			
M9・M10	U 3/8	8.5	ER20- 8.5			
		9.0	ER20- 9.0			
M14	U9/16	10.5	ER20-10.5			

Model DS/ER20 sealing disks for model RF414-OHC tappers DS/ER20型専用シーリングディスク (RF414-OHC型用) unit:mm

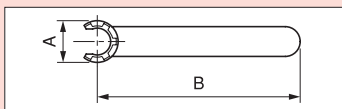
tap size		tap shank dia. d1	model	A	B
metric thread	unified thread				
M4・M5	No.8	5.0	DS/ER20- 5	16	4.0
M5・M5.5	No.10・No.12	5.5	DS/ER20- 5.5		
M6	U 1/4	6.0	DS/ER20- 6.0		
		6.2	DS/ER20- 6.5		
M7・M 8		7.0	DS/ER20- 7.0		
M9・M10	U 3/8	8.5	DS/ER20- 8.5		
		9.0	DS/ER20- 9.0		
M14	U9/16	10.5	DS/ER20-10.5		



※Note that the model ER collet and the model ES-M spanner for the model RF taper are not included as standard equipment.
 ※ER collet with an internal square (model ER-GB) is also available for model RF414 tappers.
 ※RF型に使用するER型テーパコレットおよびES-M型スパナは標準装備されていませんので、別途ご注文下さい。
 ※RF414には角穴付テーパコレット(ER-GB型)も用意しております。

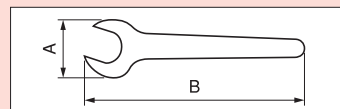


Option : Spanners for model RF オプション:RF型専用スパナ



Spanners for model RF unit:mm

model	A	B	Matching taper
ES 8M	12.4	70	RF103
ES11M	16.8	90	RF306
ES20M	29.0	120	RF414



Spanner for model RF-OHC unit:mm

model	A	B	Matching taper
SP-ER20	52.5	172	RF414-OHC

